

Valve Position Sensor (Model VOR-01)

Special Features

- Measure Valve Position Precisely.
- Analog Signal Output to Indicate Valve Position.

Model VOR-01 is a sensor to indicate the valve position by changing the valve opening position to analog signal output. This sensor is working with a stem and a precise spring, in relation with shaft movement of Robocon valve(BALEM130).

This sensor is an optimized device for various remote control system, and can be adopted easily to a system requires valve opening control.

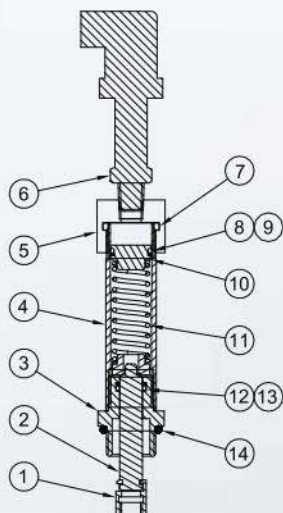
Schematic Diagram

【 Specifications 】

- Supply 8 to 28V DC
- Output 4 to 20mA
- Valve 50~100A – A Type
125~200A – B Type
250~300A – C Type
- Error Range : $\pm 1\%$

【 When Ordering, Please Specify 】

- Model No.
- Valve Size



No.	Components	Material Options
1	Connector	STS 304
2	Stem	STS 304
3	Cover Bearing	SSC 13
4	Cylinder	STS 304
5	Cap	STS 304
6	Sensor	-
7	O - Ring	N.B.R
8	O - Ring	N.B.R
9	Back-up Ring	Ethylene
10	Piston	STS 304
11	Spring	STS 304
12	O - Ring	N.B.R
13	Back-up Ring	Ethylene
14	O - Ring	N.B.R

Typical Applications



⦿ Product installation, please refer to the installation of the 25page recommendations.